

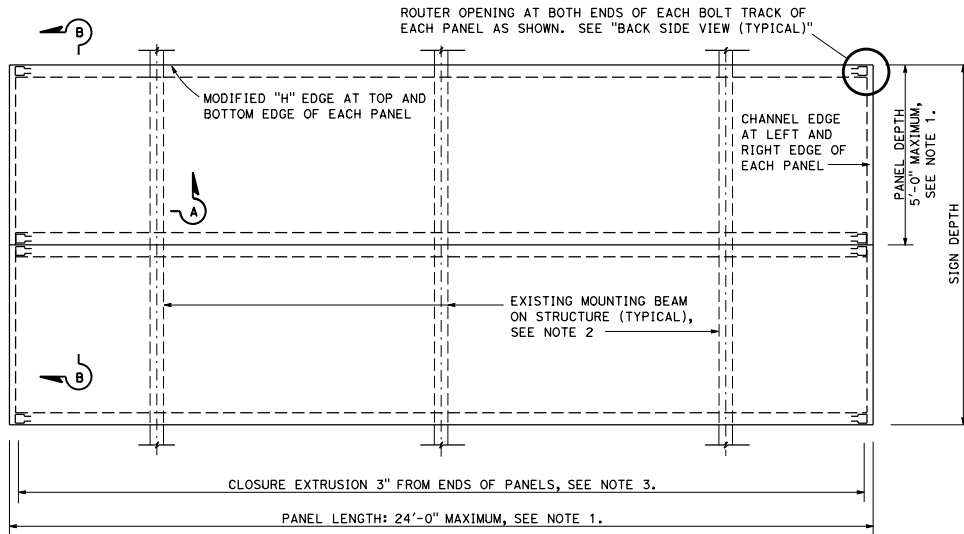
Dist	COUNTY	ROUTE	POST MILES TOTAL PROJECT	SHEET NO.	TOTAL SHEETS

Donald E. Howe
 REGISTERED CIVIL ENGINEER

October 30, 2015
 PLANS APPROVAL DATE

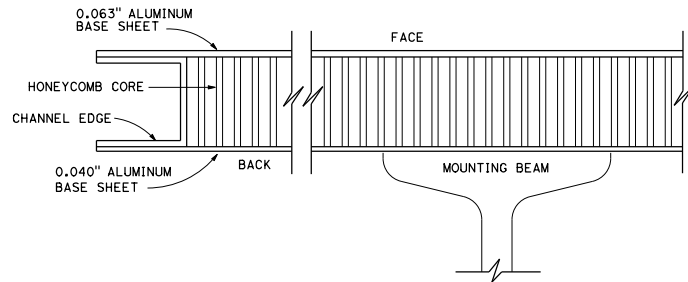
No. C46402
 Exp. 3-31-17
 CIVIL

THE STATE OF CALIFORNIA OR ITS OFFICERS
 OR AGENTS SHALL NOT BE RESPONSIBLE FOR
 THE ACCURACY OR COMPLETENESS OF SCANNED
 COPIES OF THIS PLAN SHEET.

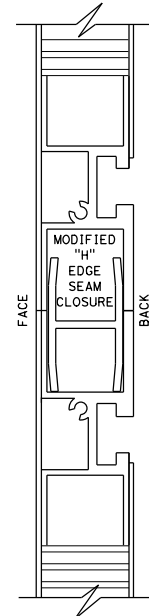
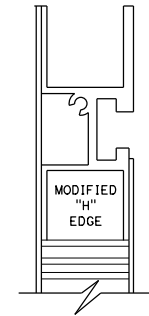


FACE VIEW OF LAMINATED PANEL

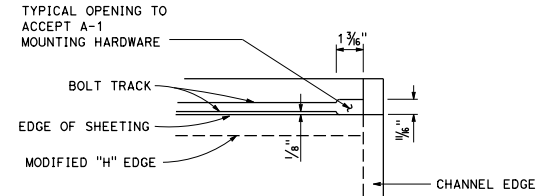
Two panels shown, see Note 7



SECTION A-A



SECTION B-B



BACK SIDE VIEW (TYPICAL)

NOTES:

1. Panel length shall be graduated in increments of 1'-0". Panel depth shall be 1'-8" to 5'-0", graduated in increments of 10".
2. Unless otherwise shown on the plans, refer to applicable Standard Plan for location of structure supports and mounting details.
3. For multiple panel signs, see Standard Plan S85 for seam closure extrusion quantities.
4. See Standard Plan S86 for extrusion details.
5. See Standard Plan S87 for A-1 and Standard Plan S88 for A-2 mounting hardware.
6. All horizontal extrusions shall be continuous.
7. Place three 1/8" ϕ weep holes in bottom of each panel. One hole in the center and one hole 3" from each end.

STATE OF CALIFORNIA
DEPARTMENT OF TRANSPORTATION

**OVERHEAD LAMINATED SIGN
SINGLE OR MULTIPLE PANEL
(TYPE A, 1" THICK)**

NO SCALE

S81