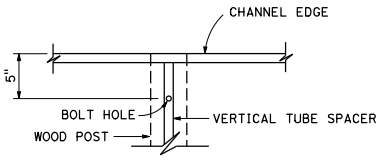


FACE VIEW OF LAMINATED PANEL
Two panels shown, see Note 6



BOLT HOLE (TYPICAL)

DIST	COUNTY	ROUTE	POST MILES TOTAL PROJECT	SHEET NO.	TOTAL SHEETS

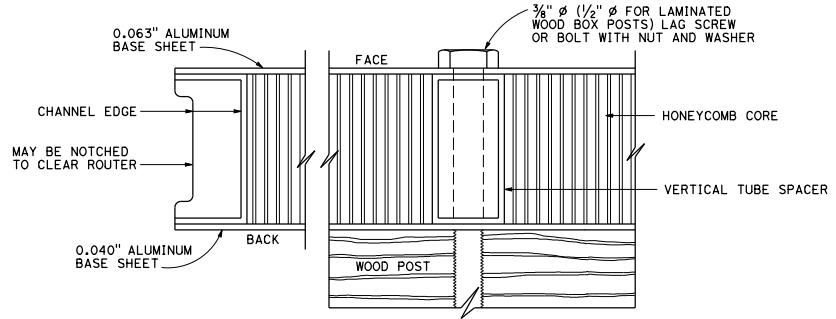
Donald E. Howe
 REGISTERED CIVIL ENGINEER
 October 30, 2015
 PLANS APPROVAL DATE
 No. C46402
 Donald E. Howe
 REGISTERED PROFESSIONAL ENGINEER
 No. C46402
 Exp. 3-31-17
 CIVIL
 STATE OF CALIFORNIA

THE STATE OF CALIFORNIA OR ITS OFFICERS OR AGENTS SHALL NOT BE RESPONSIBLE FOR THE ACCURACY OR COMPLETENESS OF SCANNED COPIES OF THIS PLAN SHEET.

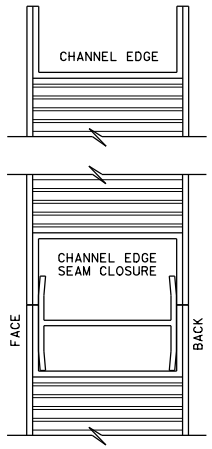
TABLE
TYPE B PANEL
2 1/2" THICK

DEPTH	LENGTH
5'-0"	15'-6" TO 16'-6"
4'-6"	15'-6" TO 18'-6"
4'-0"	15'-6" TO 20'-6"
3'-6"	15'-6" TO 23'-6"
3'-0"	15'-6" TO 24'-0"
2'-6"	15'-6" TO 24'-0"
2'-0"	15'-6" TO 24'-0"
1'-6"	15'-6" TO 24'-0"

See Note 4



SECTION A-A



SECTION B-B

- NOTES:**
1. See Standard Plan S85 for post spacing table.
 2. See Standard Plan S86 for extrusion details.
 3. All horizontal extrusions shall be continuous.
 4. Depth and length of panel shall be graduated in increments of 6".
 5. For multiple panel signs, see Standard Plan S85 for seam closure extrusion quantities.
 6. Place three 1/8" weep holes in bottom of each panel. One hole in the center and one hole 3" from each end.

STATE OF CALIFORNIA
DEPARTMENT OF TRANSPORTATION
**ROADSIDE LAMINATED SIGN
SINGLE OR MULTIPLE PANEL
(TYPE B, 2 1/2" THICK)**

NO SCALE

S83